



Tablet computer

Glacier Computer introduces its Ridgeline T100 tablet computer that takes technology mobile on the jobsite. Built for challenging environments, the unit runs on Windows CE. It has long battery life, instant on/off and minimal solid-state hard drive

needs. It has a bright 8.4" LCD display with resistive touch screen and Integrated wireless 802.11 radio and Bluetooth networking capabilities. The sealed housing and hot-swappable battery makes this unit adapted for remote work in challenging environments, report company sources.

www.glaciercomputer.com



Tool manager system

Dynamic Systems, Inc. has announced the release of a low-cost tool manager program based on bar code technology. The program, Basic Tool Manager, is targeted at contractors who want to reduce the loss of tools and save time tracking down tools for the jobs.

www.click2barcode.com

Security Sensor

Protection One, Inc. offers the Asset Protection Sensor, a security device created to prevent the theft of valuable possessions. It is used with Protection One's unique e-Secure system, a real-time monitoring service that provides updates directly to cell phones, PDAs and similar devices. The system uses patented Micro-Electro-Mechanical System (MEMS) Accelerometer technology to detect if an object has been moved and has four function modes that trigger an alarm or notification based on the user's preferences. Notifications can be delivered via e-mail, phone, immediate police dispatch or through Protection One's unique integrated e-Secure system. The sensor also has built-in anti-tampering technology. The unit measures only 1 3/4" in diameter 3/4" thick.

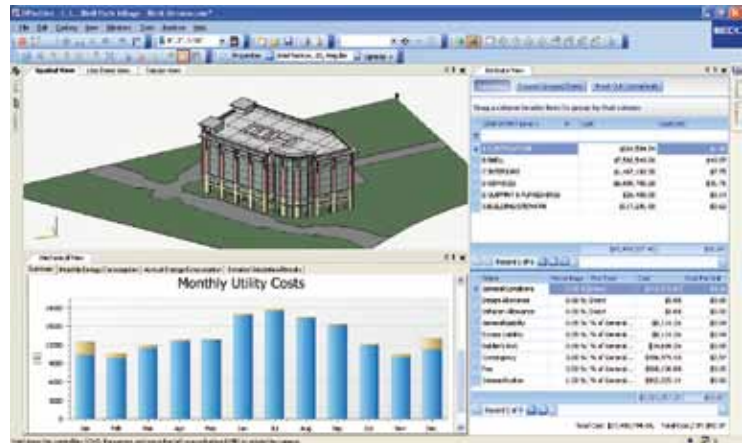
www.ProtectionOne.com



Security camera systems

D-Link offers its DCS-1100 network camera that allows easy installation and setup and can be accessed with any 3G-enabled cell phone, personal digital assistant (PDA) or real time streaming protocol (RTSP) device. The wireless 802.11 version DCS-1130 is also available. System allows remote access to security cameras anywhere there is an Internet connection.

www.dlink.com



Cost information modeling

Dprofiler software from Beck Technology improves building cost predictability by integrating 3D visualization with cost data. This first of its kind macro building information model (BIM) solution is used in the planning and conceptual design phases to produce an accurate cost estimate of a proposed design. Other BIM solutions use micro models that provide value in the production of construction documents and clash detection, but they do not help owners answer the most fundamental question early in the process, namely "Should I build this project?"

www.beck-technology.com

Detection tool

Milwaukee Electric Tool adds the 2290-21 cordless Sub-Scanner detection tool to its M12 Li-ion tool line. It can detect rebar up to 6" deep in concrete as well as the location and depth of materials such as wood, AC wiring, PEX, PVC and metals beneath gypsum, ceramic tile and marble. Its four-wheel design offers durability and smooth and accurate measurement. The unit also provides an ergonomic handle position for ease of use and a high-contrast white-on-black display for clearer readings.

www.milwaukeetool.com



**Go to www.ctsmag.com
for more information on these products.**